



## Leap ahead for outdoor wireless !

### Broadband Wireless Access ODU



**ZC-3625-5-23**

### Features

- High Reliability
- Long Distance Connectivity
- Level 7 Waterproof
- Level 17 Beaufort Scale
- Provide a vent to exclude moisture
- TDMA Technology
- Support multiple data Encryption algorithms, including WEP , TKIP , AES
- Proprietary SW management tool to provide group firmware upgrade
- Buzzer design for signal indication to provide easy installation method

### Overview

Designed for outdoor environment application, Value series ZC-3625-5-23 wireless professional equipment adopts Intel® RCP concept to provide an affordable and reliable rural connectivity solution. With rigorous design: IP67 watertight enclosure, Level 17 Beaufort Scale and high reliability surge protection, it provides high reliable, stable transmission and outstanding performance in almost any harsh outdoor environment.

ZC-3625-5-23 allows to be operated on bridge mode, providing great flexibility for system providers in various applications. Z-Com and Intel develop TDMA technology to be first releasing in the world. With a default 23dBi panel antenna, its wireless extensibility can reach at least 40km while ensures transmission quality. Additionally, ZC-3625-5-23 provides network management tool for general network administrator and advanced user.

With the features of high throughput and long-distance transmission, Z-Com and Intel® RCP provide a robust Wi-Fi based backhaul connection, bringing a new edge in future Wi-Fi application!

As an affordable and reliable rural connectivity solution. ZC-3625-5-23 is an appropriate backhaul solution for Carriers, Service Providers and Enterprises!

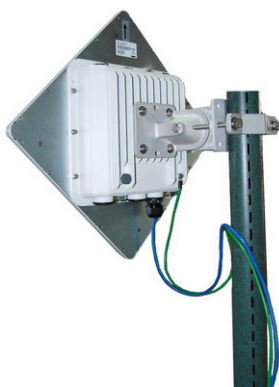
#### About Z-Com

Z-Com, Inc. is a leading global solution provider dedicated to research, design, development, and manufacturing of wireless data solutions for broadband wireless Internet access as well as various mobile data applications. Headquartered in Science-Based Industrial Park of Hsinchu, Taiwan, or what is commonly known as Taiwan's 'Silicon Valley', since 1995 Z-Com has outshined the competition by focusing on its goal, which is to deliver quality high-performance and yet cost-effective wireless networking end devices to our very dear OEM/ODM customers.

7F-2, NO. 9, Prosperity RD. 1 Science-Based Industrial Park Hsinchu, 300 Taiwan  
tel : 886-3-5777364  
fax : 886-3-577-3359  
Sales Contact : info@zcom.com.tw  
FAE Support : support@zcom.com.tw  
http://www.zcom.com.tw

Specifications	
CPU	IXP425 ,533MHz
System Memory	16MB Flash
	32MB SDRAM (64MB upgradable)
Power	Power over Ethernet (Output 20Watts ,48V /0.4A)
Operating Frequency	FCC : 5.725~5.850 GHz CE : 5.470~5.600 GHz, 5.650~5.725 GHz (Programmable for different country regulations)
RF Modulation	802.11a: OFDM (BPSK, QPSK, 16-QAm, 64QAM)
RF output power	24dBm (Max. of Avg.) at Radio for FCC (Band 4) 30 dB EIRP for ETSI 301 893 (Band3) (Controllable for different country regulations)
Sensitivity	≤-92dBm @6Mbps ≤-73dBm @54Mbps
Channel Spacing	40/20/10/5 MHz
Regulation Compliance	FCC Part 15B Class A
	FCC Part 15C
	ETSI 301 893
	EN301 489-1/17 Class A
	EN60950
Features	
Operation Mode	Base Station , CPE, PtP, P2MP
Security	WEP 64/128bits, WPA-PSK/WPA2-PSK, WPA/WPA-2
Radio Bandwidth Control	5MHz/10MHz/20MHz/40MHz
Super A	Fast Frames, Burst, Compression
TDM Coordination	Traffic management
Intel® TDMA	For long distance transmission
Distance in Meters	Auto ACK-Time adjustment
Wireless Isolation	YES
Management Statistics	Wireless and Ethernet
Link Test	Self-Wireless Connection test
Configuration & Management	Web-based Management (Secure SSL)
	Command Line Interface (SSH or RS-232 (9600))
	Windows-based Utility, SNMPv2
FW Upgrade	Web/Windows management tool

Antenna	
Gain	23dBi (Default for FCC)
Frequency Range	5400~5850 MHz
HPBW (horizontal)	10°
HPBW (vertical)	10°
Dimensions	320×320×18mm
Physical & Interface	
Ethernet	10/100 Base T x1 Auto-sense, Negotiation
RS-232	YES
USB	N/A
Buzzer	Signal Indication
Reset Pin	Reset system to factory default
Enclosure & Environment	
External Antenna Connector	N-Type
Enclosure	IP-67 (Die-Casting) Level 7 Waterproof Level 17 Beaufort Scale Vent design Antenna Flexibility
Mounting	Pole Mount (ADC-12 Aluminum alloy)
Temperature	-30 ~ 70 °C, (Operating)
PCBA Dimensions	160 × 135 mm
Weight	2.4 Kg
Humidity	10~95%, (Operating)



### Z-Com, Inc.

7F-2, No.9. Prosperity RD. I Science-Based Industrial Park  
Hsinchu ,300 Taiwan

Tel: +886-3-5777364 Fax:+886-3-5773359

Sales Contact: [info@zcom.com.tw](mailto:info@zcom.com.tw)

Wi-Fi is a trademark of the Wireless Ethernet Compatibility Alliance, Inc. Windows is a registered trademark of Microsoft Corporation. WIMAX Forum, the WIMAX Forum logo, WIMAX Forum Certified, and the WiMAX Forum Certified logo are trademarks of WIMAX Forum.

©2006 Z-Com, Inc. All rights reserved. Z-Com logo is a trademark of Z-Com, Inc. All other trademarks mentioned herein are property of their respective owners. Specifications are subject to change without notice.