



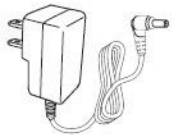
ZN-7100 SERIES Wireless Access Point Quick Setup Guide

This Quick Setup Guide provides step-by-step instructions on how to set up your ZN-7100 Series Access Point. After completing the steps described in this Guide, you will be able to place the AP at your site and provide wireless network access to users.

PACKAGE CONTENTS



ZN-7100-2HO / ZN-7100-2DHO Wireless Access Point



Power Adapter



Screw Kit



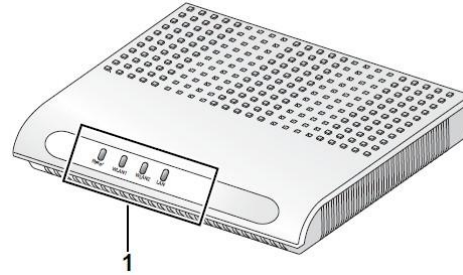
Ethernet Cable



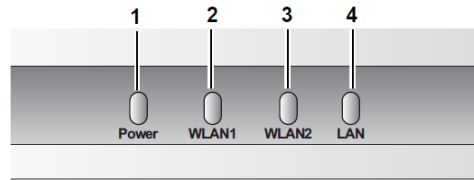
Warranty Card

HARDWARE OVERVIEW

Front View



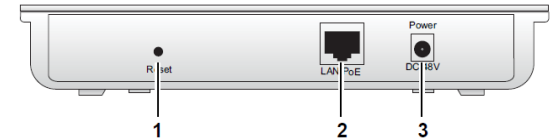
No.	Item
1	LED Indicators



No	LED	State	Description
1	Power	On	Power on, device ready
		Off	No power to AP
		Blinking	System initializing
2	WLAN1	Solid Green	2.4G radio enabled
		Off	2.4G radio disabled
		Rapid Blinking	Data forwarding through 2.4G radio

No	LED	State	Description
3	WLAN2	On	5G radio enabled
		Off	5G radio disabled
		Rapid Blinking	Data forwarding through 5G radio
4	LAN	Green On	Ethernet is linked
		Off	No Link
		Blinking	Ongoing data transmission

Rear View



No.	Item
1	Reset Pinhole
2	LAN/PoE
3	48VDC

SETUP REQUIREMENTS

Before installing your ZN-1000 Series Access Point, be sure that you have the following:

- A computer running Windows 7, Vista, or XP
- A CAT5 UTP cable of required length
- One of the following power sources:
 - IEEE 802.3at-compliant Power over Ethernet (PoE) source
 - Power adapter came with the package

Note:

If the AP is deployed with a AP controller, please follow the section **INSTALL THE AP** to proceed.

STEP 1: POWER ON THE AP

1. Using the shipped power adapter to connect to rear side of the AP. Then connect the power plug to a wall socket.

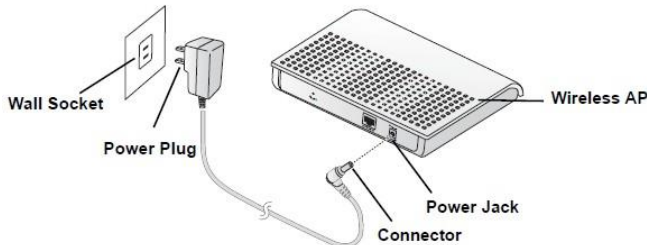


Figure 3-2. Connecting to AC Power

Important!

Use only the 48VDC power adapter that came with the wireless AP.

Alternatively, you may connect the PoE port to a PoE switch for power and network connectivity.

2. After a minute, verify that the PWR LED is a steady ON.

STEP 2: CONNECT THE AP TO YOUR PC

1. Using an Ethernet cable to connect your PC's Ethernet port to the LAN port on the rear of the AP.
2. Start > Settings > Network Connections
Start > Control Panel > Network Connections
3. When the Network Connections window appears, right-click the icon for Local Area Connection, and then click select Properties.
4. Select Internet Protocol (TCP/IP) from the scrolling list, and then click Properties.
5. Select Use the following IP address option (if it is not already selected), and then make the following entries:
 - IP address: Any address in the 192.168.1.x network
 - Subnet mask: 255.255.255.0
6. Click OK to save your changes, and exit the dialog box.

STEP 3: LOG INTO THE AP

1. On your PC, open a Web browser window.
2. In the browser, type <https://192.168.1.1> and press <Enter> to connect to the AP.
3. When a security alert dialog box appears, click OK/Yes to proceed.
4. When the login page appears, enter the following:
 - Username: admin
 - Password: password
5. Click Login.

STEP 4: CONFIGURE THE AP

1. On the Web interface menu, click Basic Setup.
2. Select Wireless Mode: FAT AP.
3. Select **DHCP Client** to obtain an IP address from the DHCP server automatically, or select **STATIC** to enter the values manually. Click Apply to save changes.
4. Go to RF Configure > Wireless Settings. (For dual band AP ZN-7100-2DHO 5G setting, select Card 2 first then go to RF Configure > Wireless Settings.)
5. Select a clean channel.
6. Select your location from Country/Region. Click Apply to save the changes.
7. Go to RF Configure > Security Profile
8. Select a profile (eg. #1) , then click **Edit**.
9. Type the name of the network in the SSID field.
10. Enable authentication and encryption as needed. Click Apply to save the changes.
11. Repeat Steps 8-9 for each Profile # interface that you want to enable.
12. Click Logout to exit the Web interface.

STEP 5: INSTALL THE AP

1. Disconnect the AP's power adapter from the power outlet (or disconnect the PoE cable).
2. Move the AP to its permanent location (accessible to both power source and network connections).

INSTALLING ON A TABLE or SHELF

1. The AP can be installed on top of a table or shelf. Make sure it is installed on a flat surface that is near an AC power source.

MOUNTING ON A WALL

The wireless AP can be mounted on a wall to save space, for aesthetic considerations, and to achieve the best wireless coverage even in blind areas indoors.

1. Choose a solid, even surface with ample room for cabling.

Note:

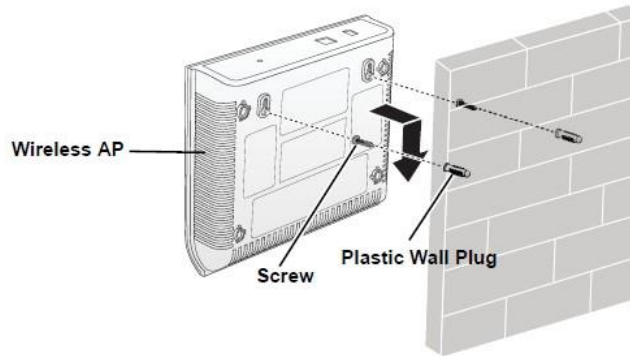
Make sure that the required cables are accessible within the installation location

2. Drill holes on the wall corresponding to the mounting holes under the AP.

Note: Make sure the wall is solid and stable.

Note: Make sure the holes match the mounting holes.

3. Insert the plastic wall plugs into the drilled holes.
4. Insert the provided screws into the wall plugs.
5. Align and insert the wider end of the mounting holes into the screw heads.
6. Slide the device up until the narrow end of the mounting holes are securely engaged to the screw heads.



TIP: Follow these guidelines to maximize wireless signal performance:

- Place the AP as close to the center of the room, and away from any physical obstructions, as possible.
- Avoid any interfering sources.

STEP 5: POWER AND CONNECT

1. Use an Ethernet cable to connect the AP to the appropriate device:
 - The ISP's modem or gateway device
 - The Ethernet switch that is connected to the ISP's device.
2. Connect the AP power adapter to the AP, then to a convenient power source. Alternative, you may power AP with a PoE switch by connecting them with an Ethernet cable.
3. Verify that the PWR and LAN LED are lit.

STEP 5: VERIFY THE CONNECTION

1. Use any wireless-enabled computer or mobile device to search for and select the wireless network you've previously configured.
2. If you can connect, open a browser and link to any public Web site.

Congratulations! Your wireless network is active and ready for use.